

**WORKING TOGETHER
FOR BETTER LIVES**

for children with disabilities or additional needs



SEND Reforms

Parent Carer
Engagement

May 2026



Aims of today's session

- Provide an overview of some of the key elements of the reform consultation
- Provide a space for discussion and for you to share your views
- Feedback from the session will also be fed into the local SEND plan which is being developed and our response to the consultation

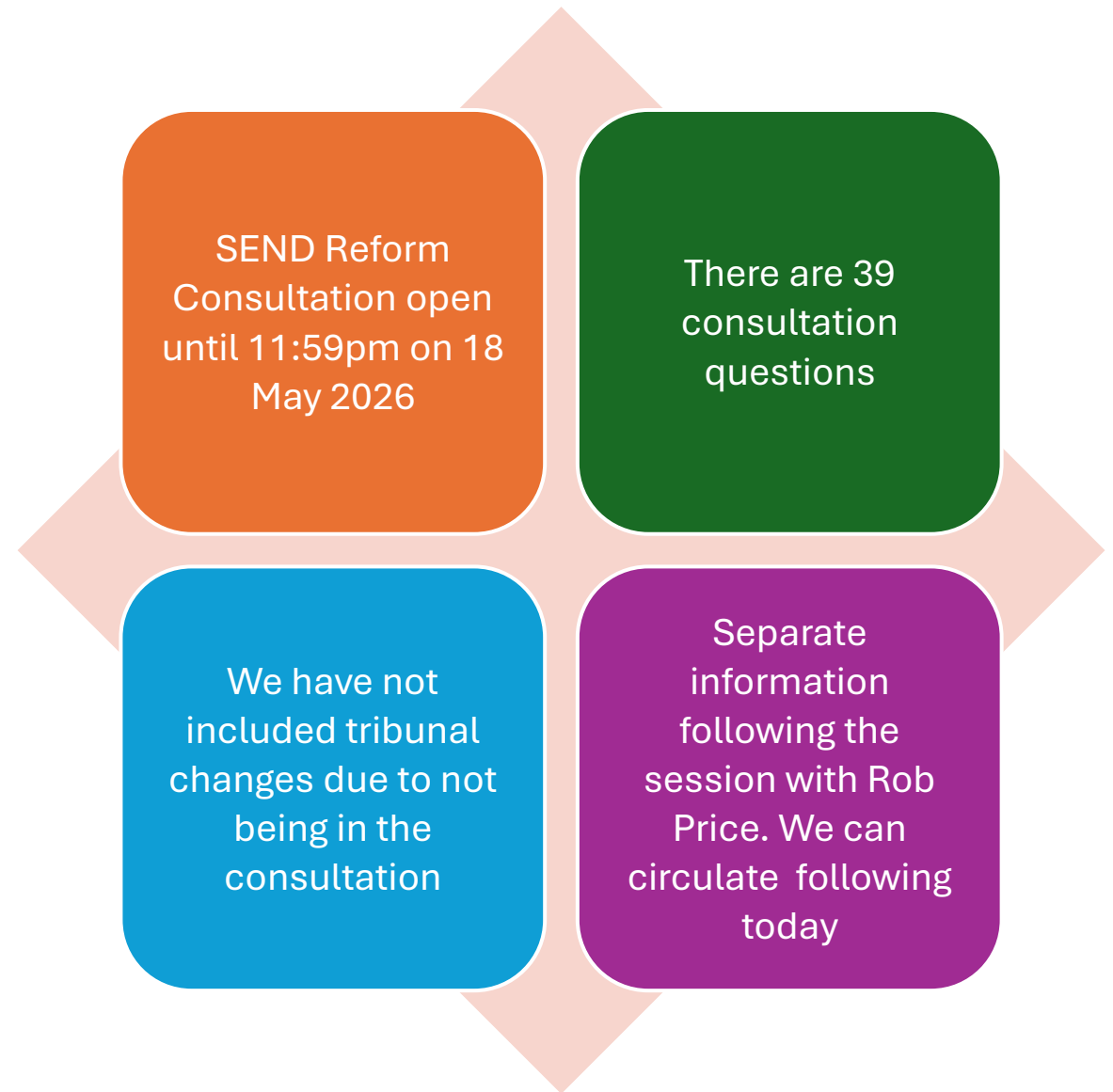


Key points

<https://consult.education.gov.uk/send-strategy-division/send-reform-putting-children-and-young-people-firs/>

SENDreform.CONSULTATION@education.gov.uk

Inclusive mainstream fund for schools

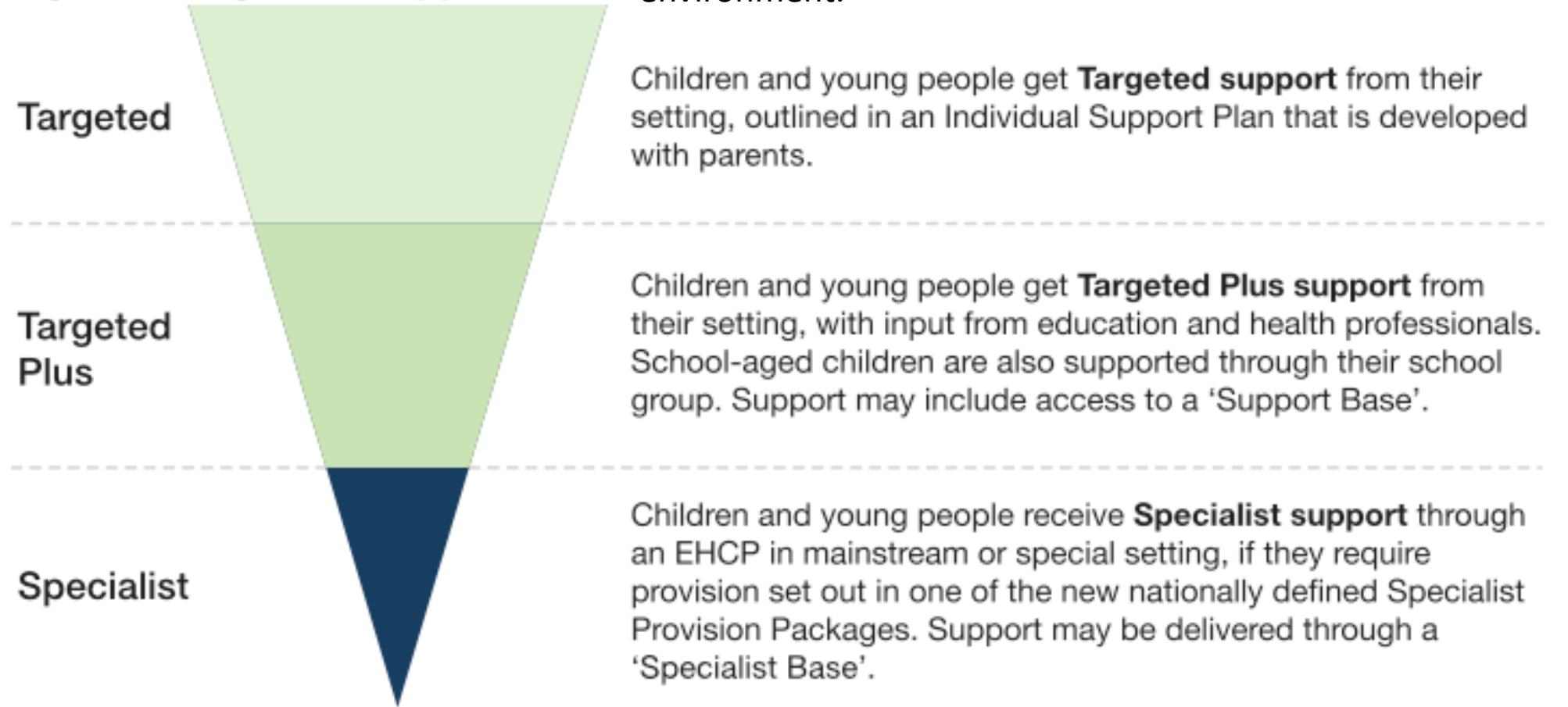


<https://www.gov.uk/government/publications/inclusive-mainstream-fund-2026-to-2027/inclusive-mainstream-fund-for-schools-methodology-2026-to-2027>

Four levels of support



Figure 4: Layers of Support



National Inclusion standards



The Government is proposing new **National Inclusion Standards**. These would be an online guide to help schools and staff understand:

How to spot when a child may need extra support

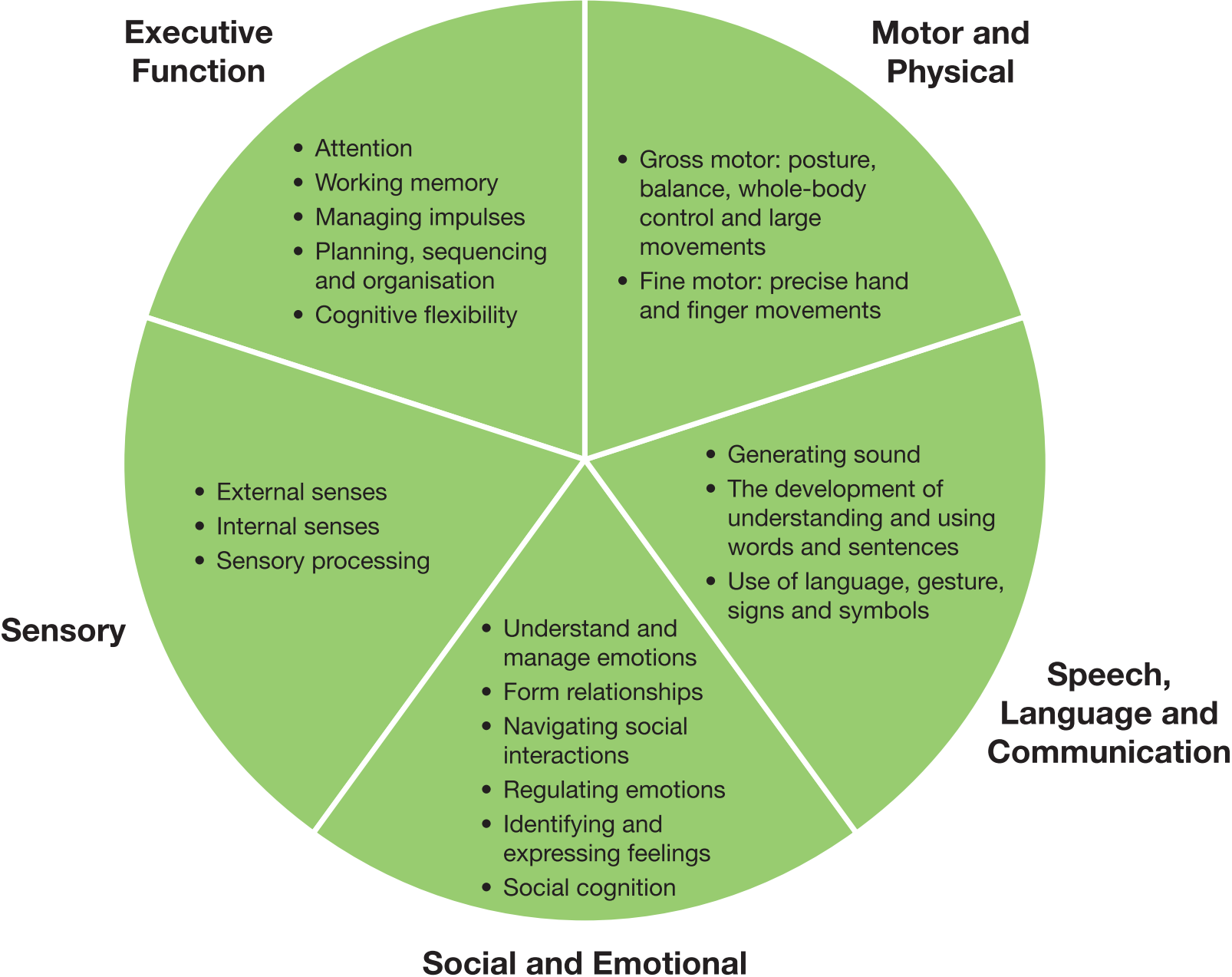
What good SEND support looks like

Which proven approaches work best for different needs

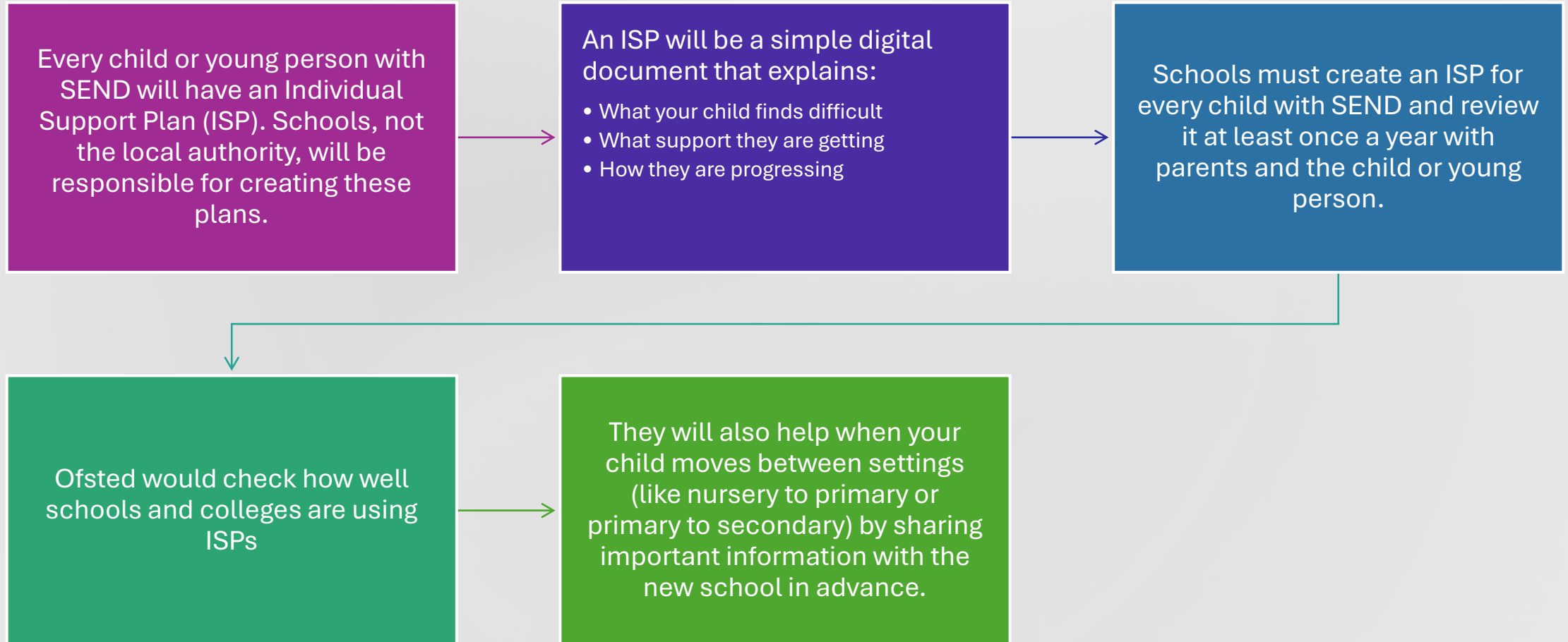


These standards will be created with input from children, families, and professionals, and will be updated every two years to keep them current.

New areas of need



Individual Support Plans (ISPs)



Education, Health and Care Plan and Specialist Provision Packages

Specialist Provision Packages (SPPs) are support packages designed by national experts to help children with different types of needs. There are expected to be around seven types, and a child may receive more than one if needed.



An Education, Health and Care Plan (EHCP) will:

Give your child a legal right to the support in their package

Be created by the local authority, working with you and your child's setting

Be reviewed at key stages in your child's education



Children with an EHCP will also have an Individual Support Plan (ISP), which explains their day-to-day support.



EHCPs will be for children with the most complex needs. The exact definition of "complex needs" hasn't been set yet,

Inclusion Bases

- The Government plans to introduce “Inclusion Bases” in mainstream schools and colleges. These will provide extra support so more children can attend a local mainstream setting. Some schools already have similar support, sometimes called SEN units or resource bases.
- There will be two types:
 - **Support Bases** – run by schools to give extra help
 - **Specialist Bases** – run by the local authority for children needing more intensive support
- The aim is for every secondary school to have an Inclusion Base, backed by £3.7 billion of funding.
- These bases aim to offer flexible, supportive spaces for children who need more help than a typical classroom can provide.

Surrey Provisional
allocation 2026-2027
£8,299,505

Experts at Hand

- The proposals describe a new team of specialists called Experts at Hand in each local area that would bring more specialist professionals into early years settings, schools and colleges.
- Education staff should be able to ask these teams of specialists for advice, guidance and input into the support for children with SEND.
- This may include:
 - Speech and language therapists
 - Educational psychologists
 - Specialist teachers
 - Health professionals
 - Others
- Not working with individual children



Post-16 support and preparing for adulthood

- The areas covered for young people transitioning to post-16 education and into adulthood include:
- Earlier planning (starting at least 12 months before leaving school)
- Supported Internships, apprenticeships and pathways into work or higher education
- Access to Experts at Hand in post-16 settings
- Support to continue up to the age of 25





Planned phased approach

- 2026–2028 (Phase 1): System preparation, including launching the £1.6 billion Inclusive Mainstream Fund, expanding educational psychology, and publishing new standards.
- 2028–2029 (Phase 2): New legislation, with major changes expected to come into force from September 2029.
- 2030+ (Transition): No changes to EHCP support are expected before at least September 2030, with a phased transition planned for existing EHCP holders



Your views



- What are your initial thoughts when you read the white paper?
- What benefits can you see with the proposals?
- Do you have any concerns about the proposals? If so, what are they?
- Are there any elements that you feel are missing/not mentioned in the white paper?
- Out of the proposals - What do you feel will impact your child the most and why?

Next steps



- PCF representatives have attended meeting with the National Network of Parent Carer Forums to help shape the national response
- We are working with Surrey Council, ICB, schools and others to develop a plan of engagement and co-production to help shape the delivery of the plan over the next 3 years
- Feedback from today will be shared anonymously to help inform the local plan design